



# Impact Report

Arkansas Women's Business Development Center

# GFF

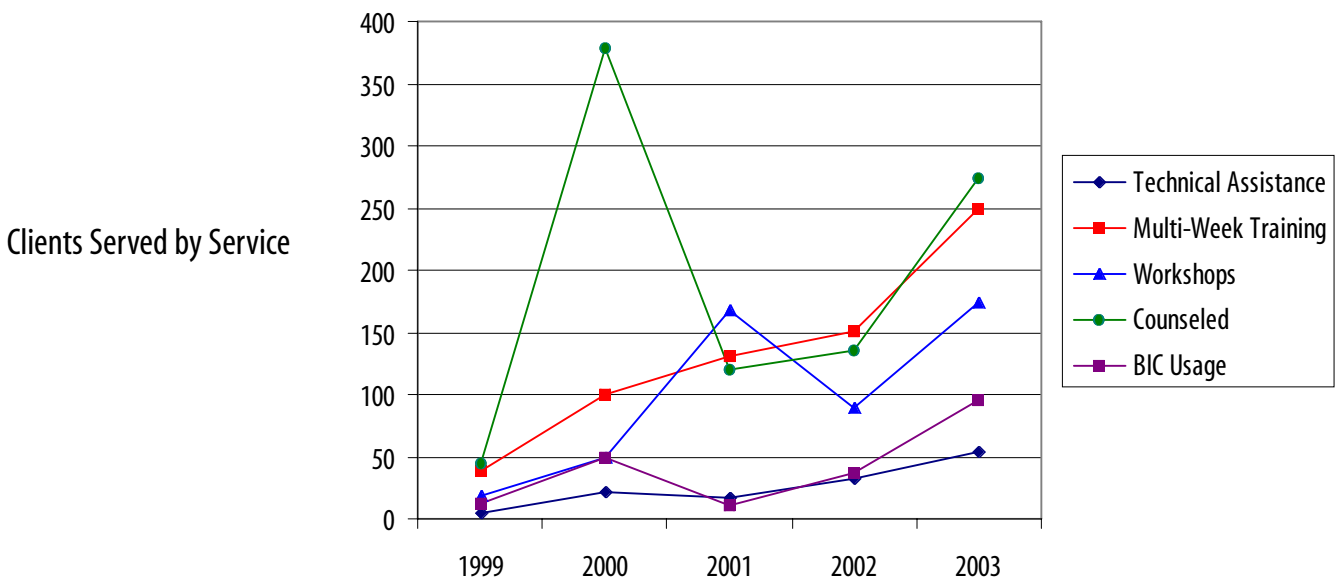
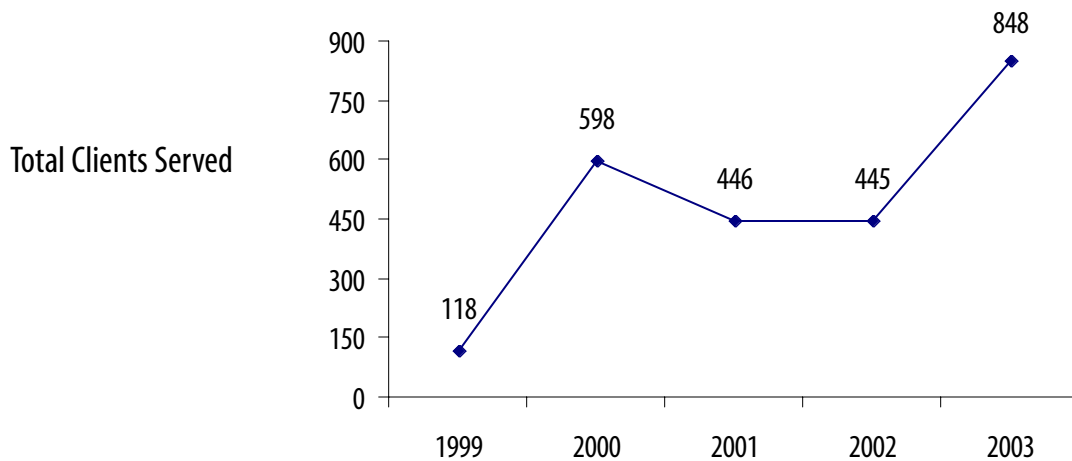
Good Faith Fund

February 2004

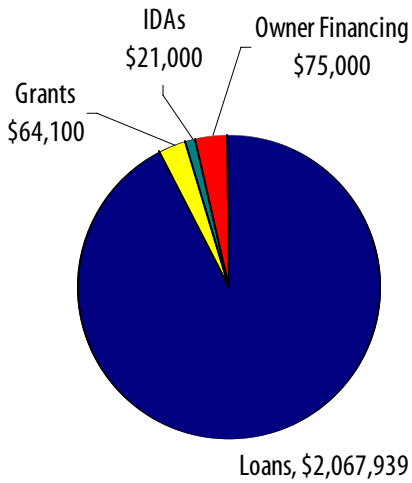
## Who We Serve

- 2455 clients served since 1999
- 94% are female
- 75% are African American
- 33% have a high school diploma
- 48% have some college education
- 18% have a Bachelor's degree
- 36.38% have gross income between \$10k - \$25k
- 28.86% have gross income between \$25k - \$50k
- 19.33% have gross income above \$50K

## Clients Served

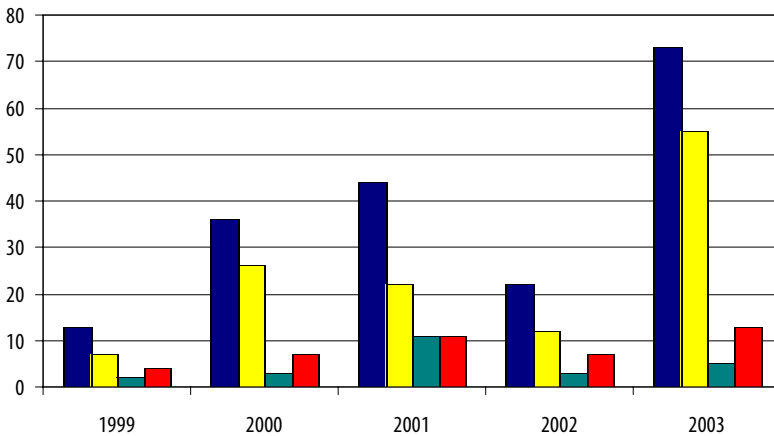


## Creating Access to Financing



Year	# Loans	# Grants	# IDAs	# Owner Financed	Total
1999	4	1	0	0	5
2000	7	2	0	0	9
2001	9	0	1	1	11
2002	10	0	5	0	15
2003	5	1	4	1	11

## Impact on Business



	1999	2000	2001	2002	2003
Business Assisted	13	36	44	22	73
Business Retained	7	26	22	12	55
Business Expanded	2	3	11	3	5
Business Started	4	7	11	7	13

## Impact on Jobs

